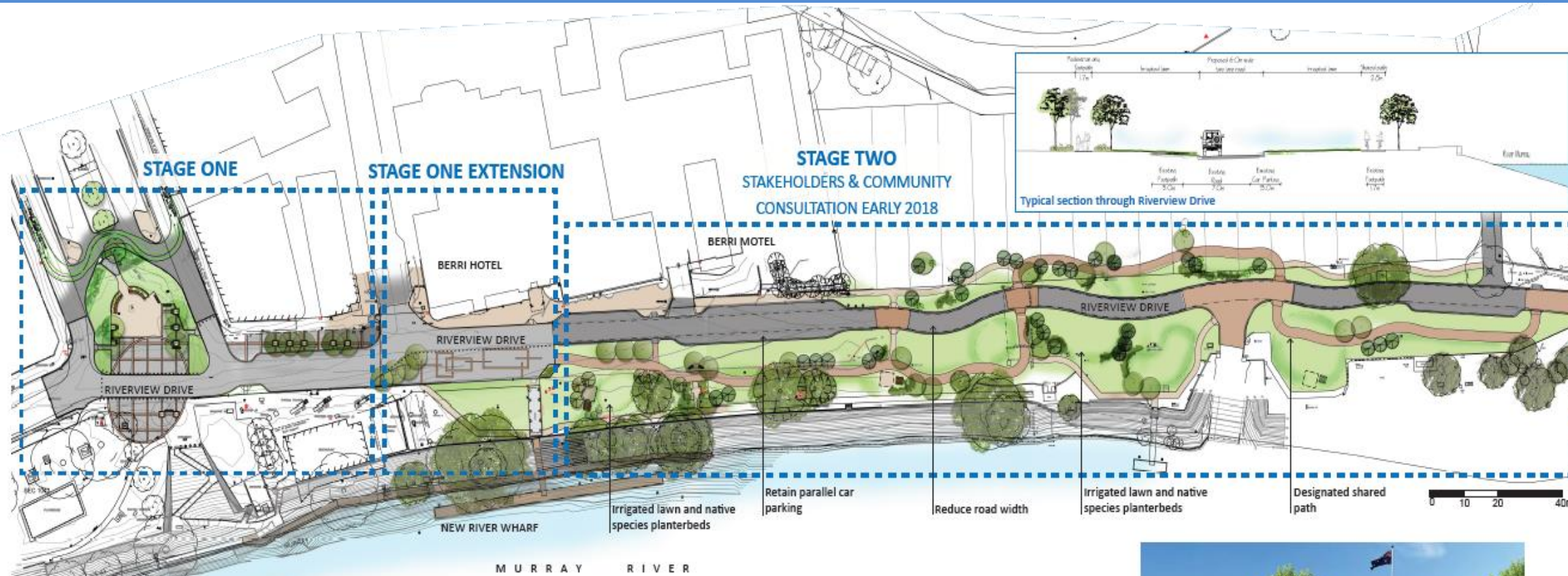
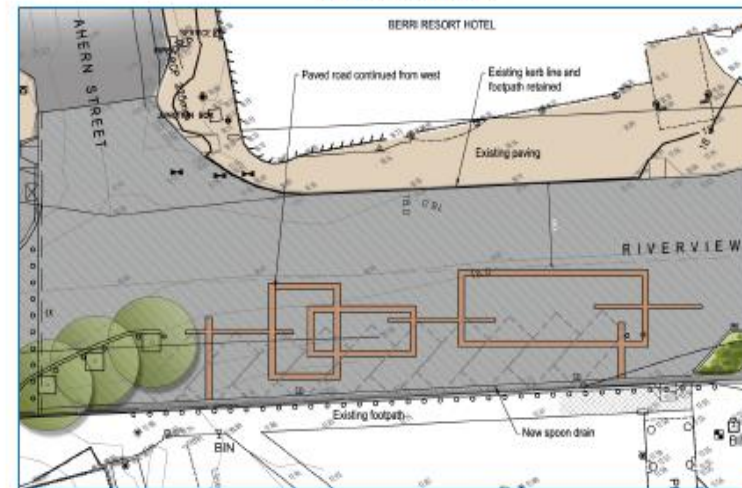
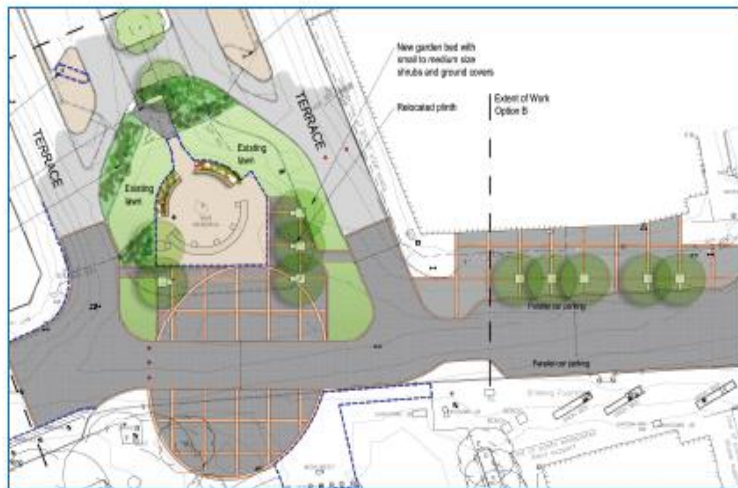


BERRI RIVERFRONT PRECINCT REDEVELOPMENT



STAGE ONE - APPROVED
Construction 2018

STAGE ONE EXTENSION
PENDING FUNDING APPLICATION OUTCOMES
Construction 2018



REVITALISING THE BERRI RIVERFRONT PRECINCT

Berri Barmera Council is delivering generational projects in the Berri CBD riverfront precinct including staged redevelopment of Riverview Drive and establishment of a new wharf.

Riverview Drive was originally designed for traffic crossing the river by twin ferries, which ceased operation 20 years ago with the opening of the Berri Bridge. The 13 metre wide stretch of road has remained unaltered since then and is overdue for resizing and returning redundant space back to the community in the form of improved park areas and event spaces.

Projects aim to provide the following benefits:

- Continued two way vehicle movements through the precinct with no restrictions
- Improved access for pedestrians and cyclists throughout the precinct
- Wider riverside public spaces generated by reducing road width
- Traffic calming environment to emphasise shared use zone
- Economic benefits through providing a revitalised environment and new business opportunities
- Purpose designed spaces to support civic and entertainment events
- Integration of public and private spatial design to maximise connectivity throughout the precinct – including synergy with major tourist accommodation developments planned and underway at Caravan Park and Hotel
- Improved disability access throughout the precinct including to the new wharf
- Riverbank stabilisation
- Opportunities for river vessels to have direct access to riverfront precinct

KEY DATES

- Stage One (refer poster) construction April to August 2018
- Stage 1B (refer poster) construction July to October 2018 subject to funding
- Wharf Development mid 2018
- Stage Two design consultation April 2018
- Stage Two constructions likely 2020 subject to funding

For further information – please contact
Manager Environmental Services / Major Projects
Mr Myles Somers
(08) 8582 1922
bbc@bbc.sa.gov.au